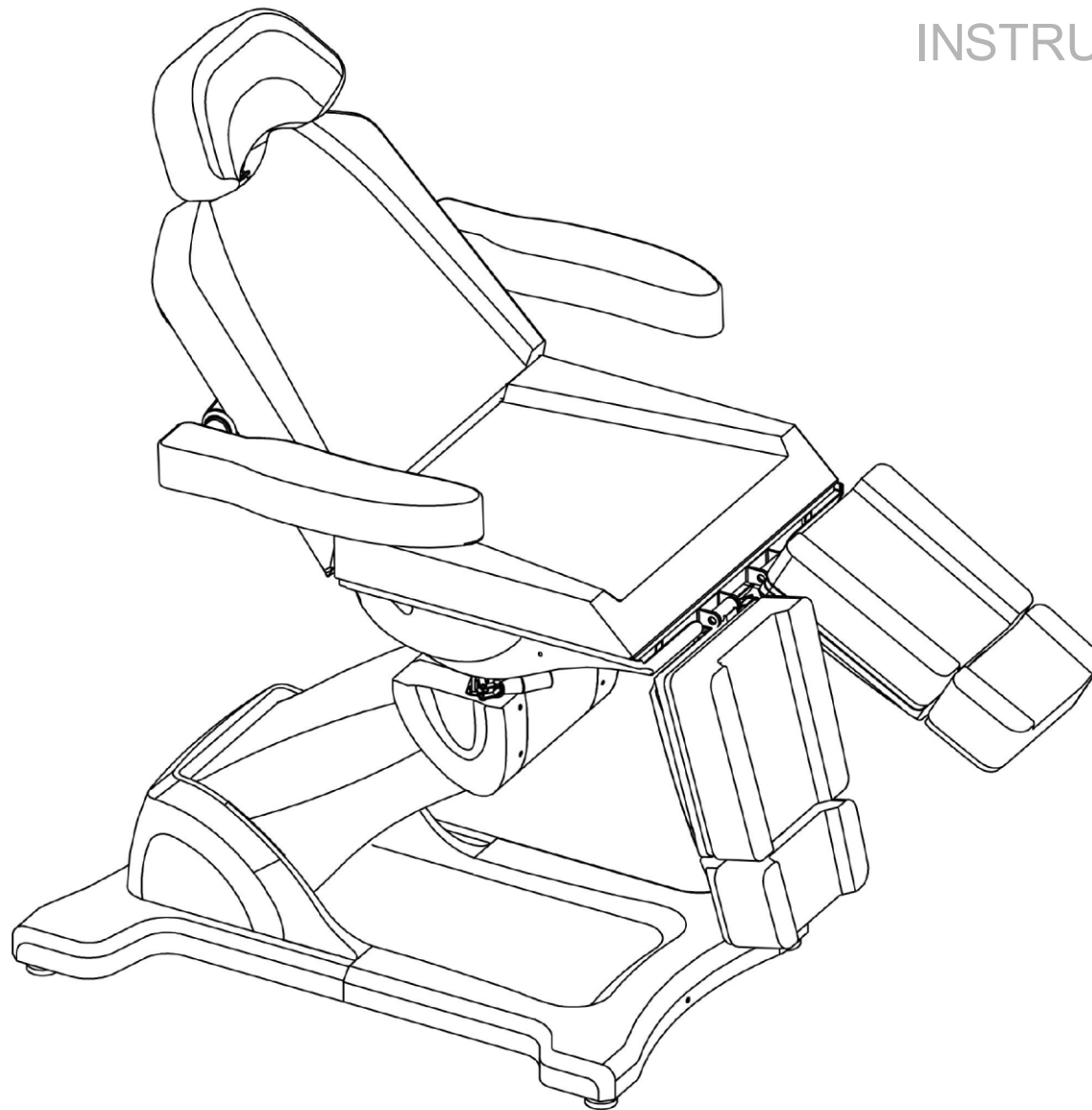


DIR[®]

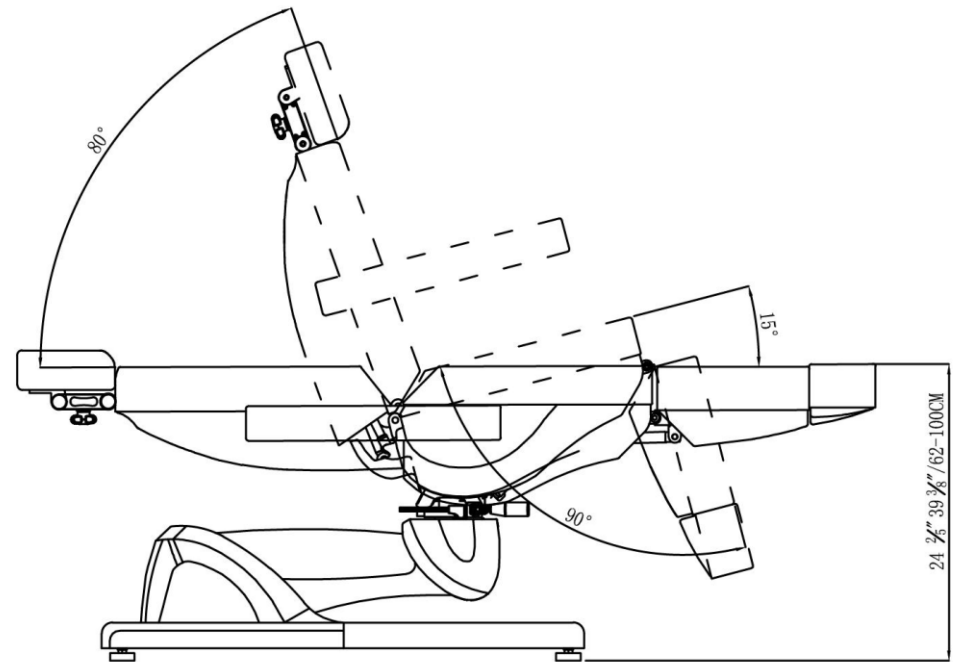
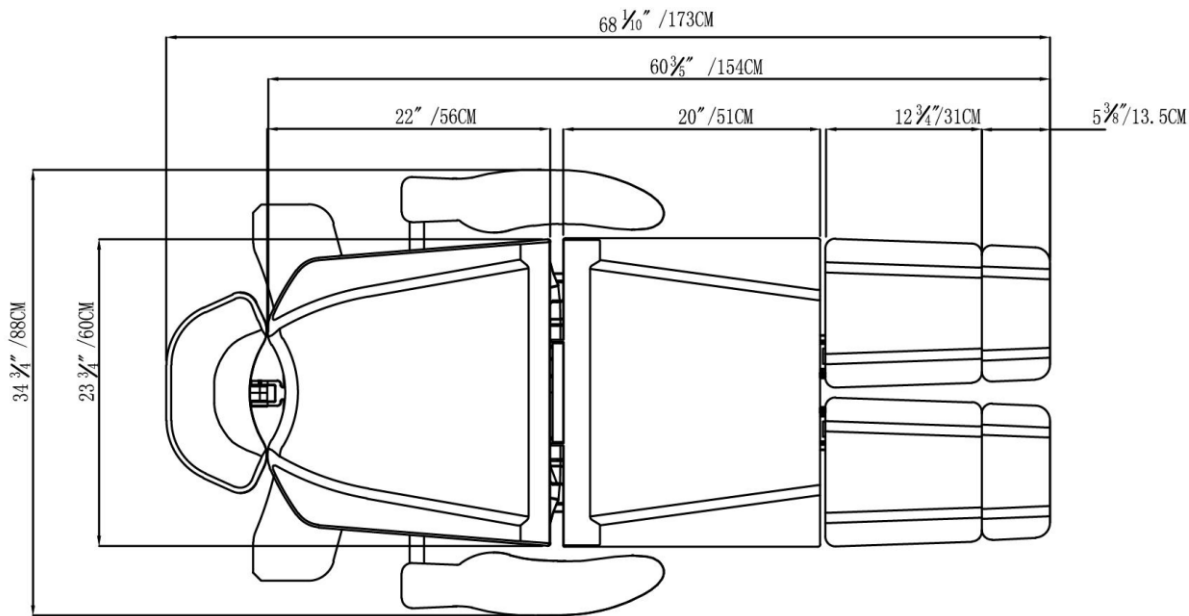
Libra II

8710-2G

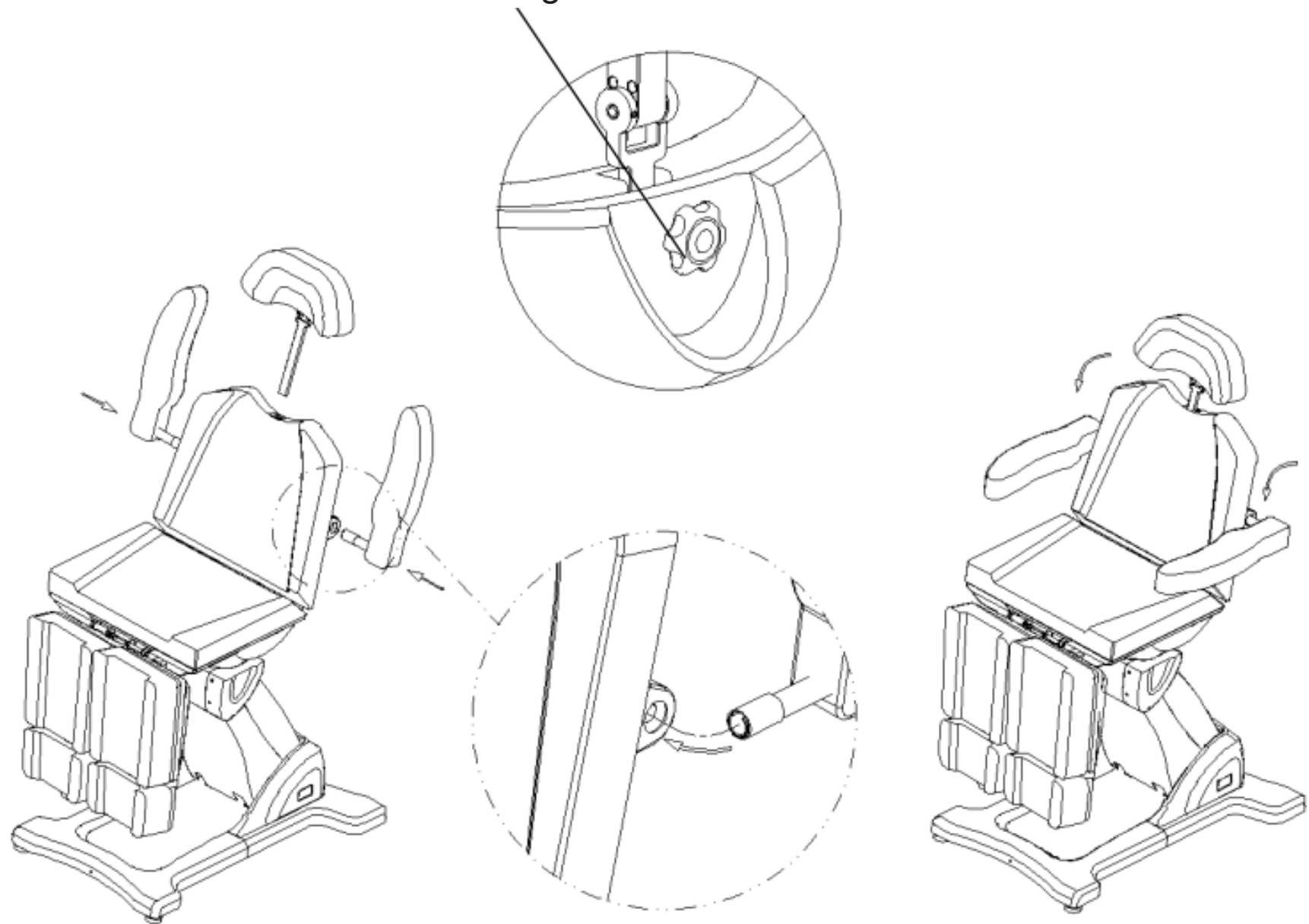
INSTRUCTION MANUAL



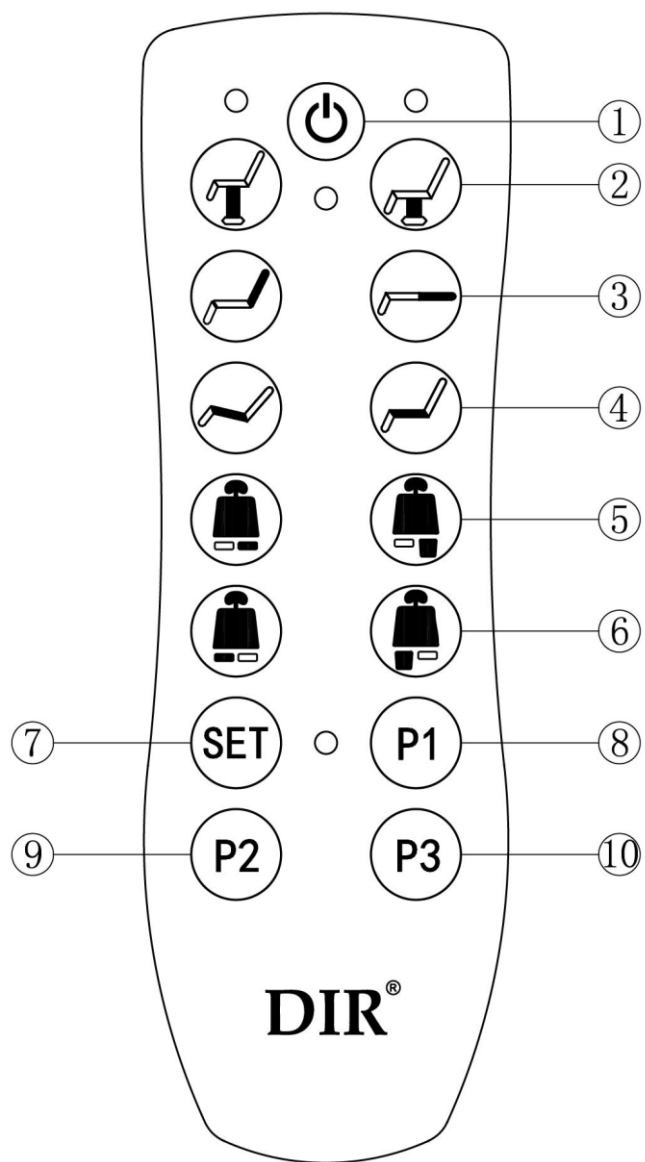
	USA	UK
Net Weight	200 lbs	91 kg
Max Load Capacity	396 lbs	180 kg
Input Voltage	AC 110V/60HZ	AC 230V/50HZ
Output Voltage	DC 24V	DC24V



Headrest Locking Knob



Armrest Installation

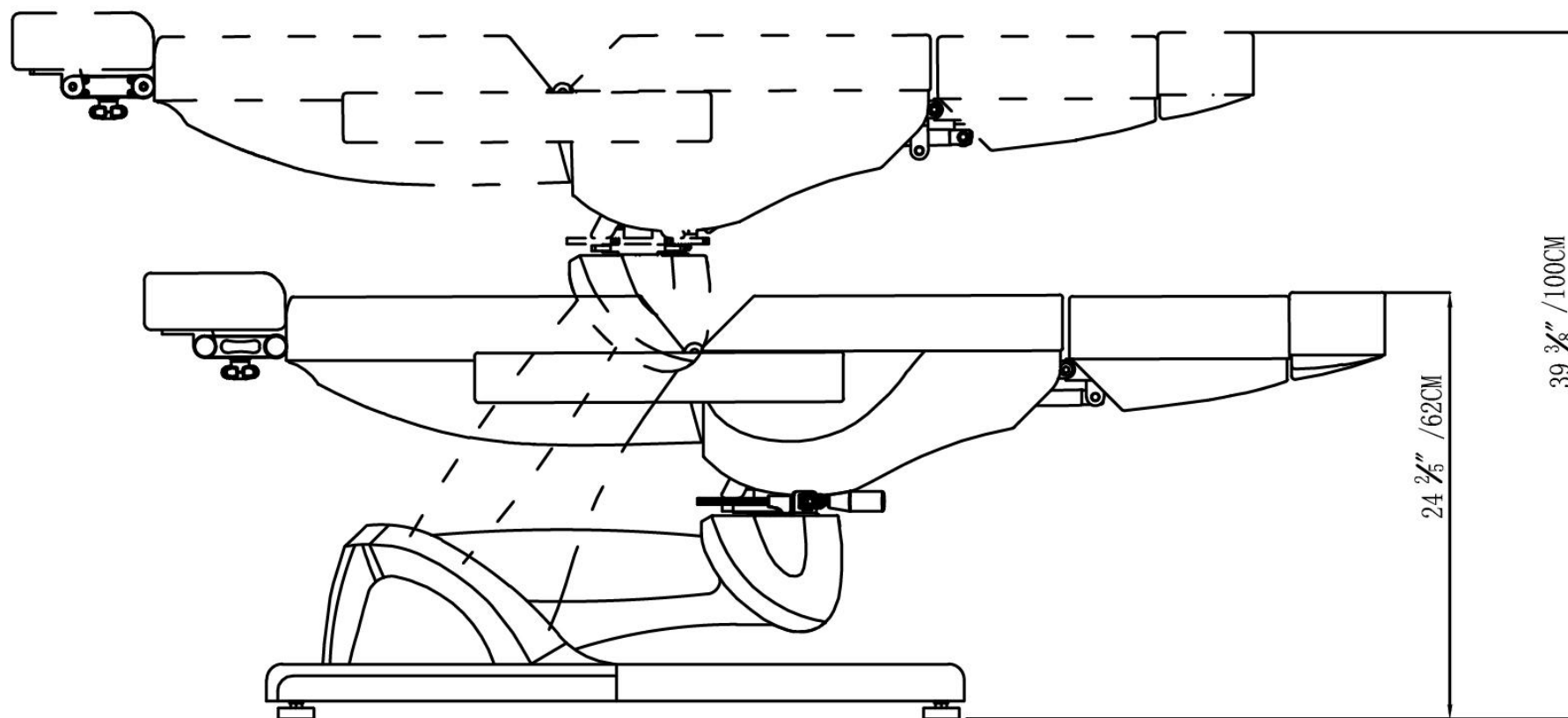


Press button ① to power ON the bed and be able to use all controls. Press ① again to power OFF the bed and the bed will return to its original state.

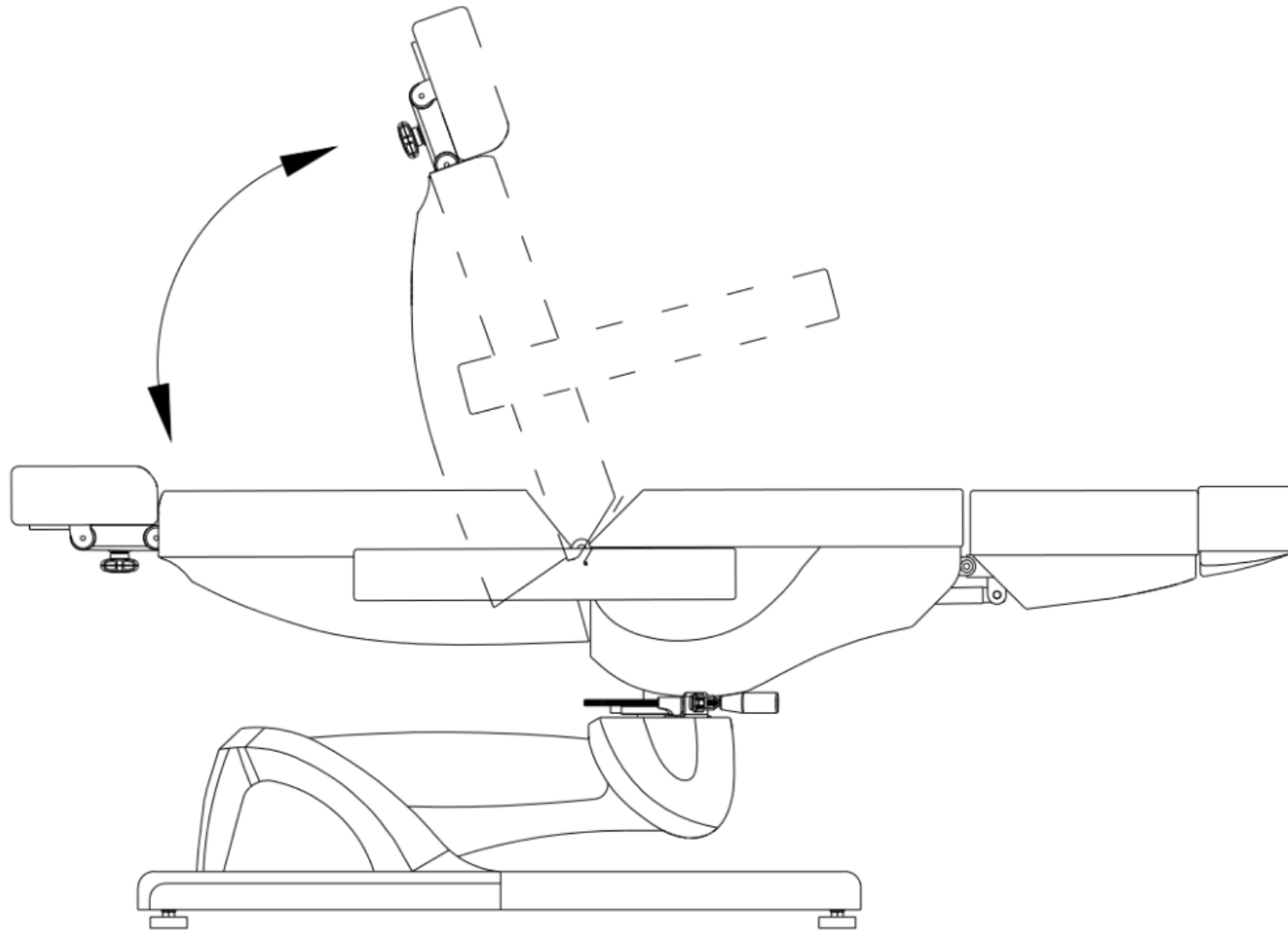
Press button ② to adjust the whole bed up and down .
Press button ③ to adjust the backrest up and down.
Press button ④ to adjust the incline angle for the seat.
Press button ⑤ to adjust the right footrest up and down.
Press button ⑥ to adjust the left footrest up and down.
Press button ⑦ press and hold until blue light comes on to begin preset memory settings.

Press button ⑧-⑩ for your pre-set preferred height & chair position, you can preset up to 3 different pre-set positions

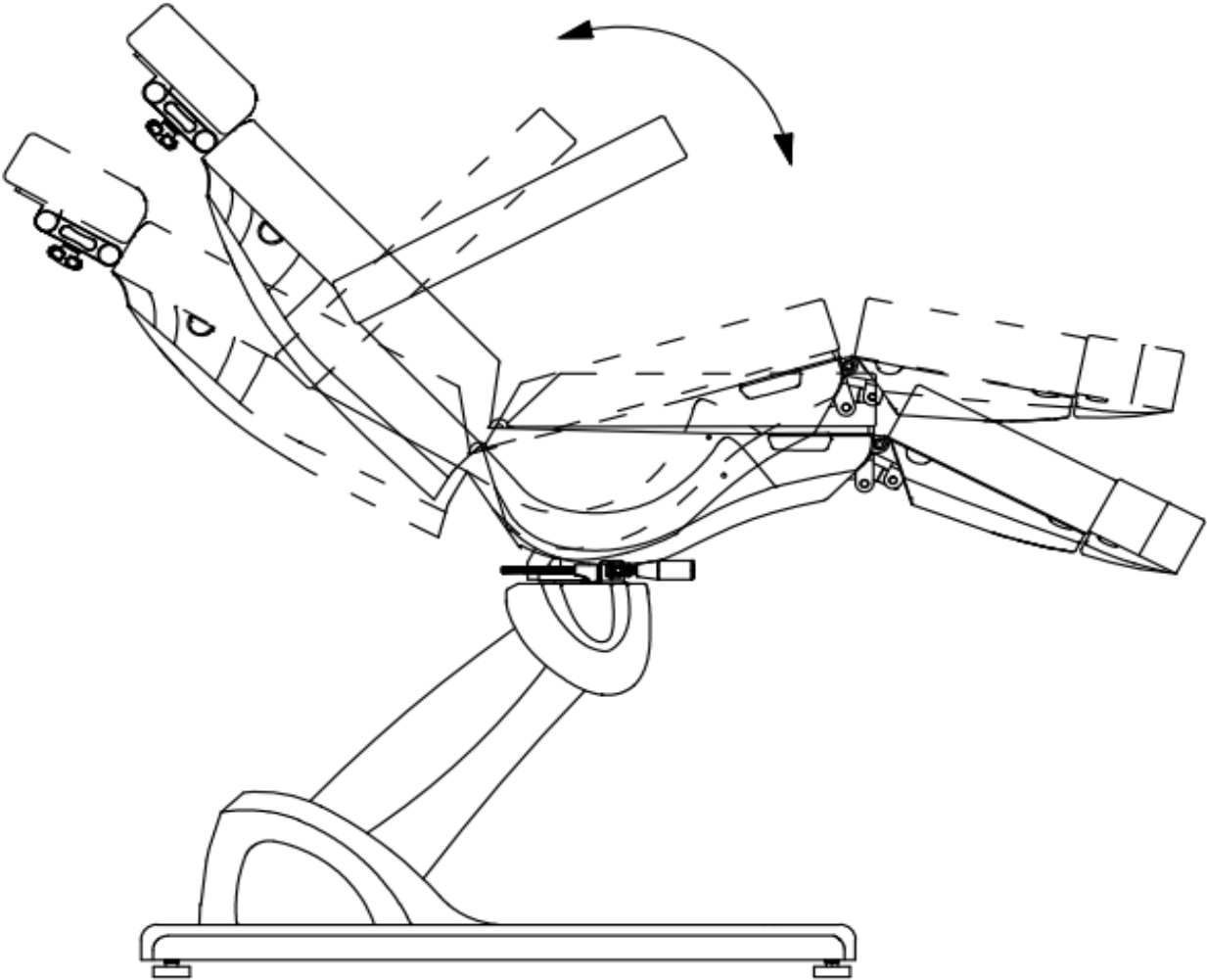
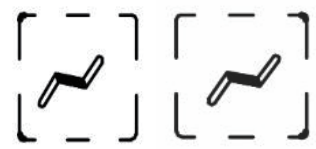
Height Adjustment



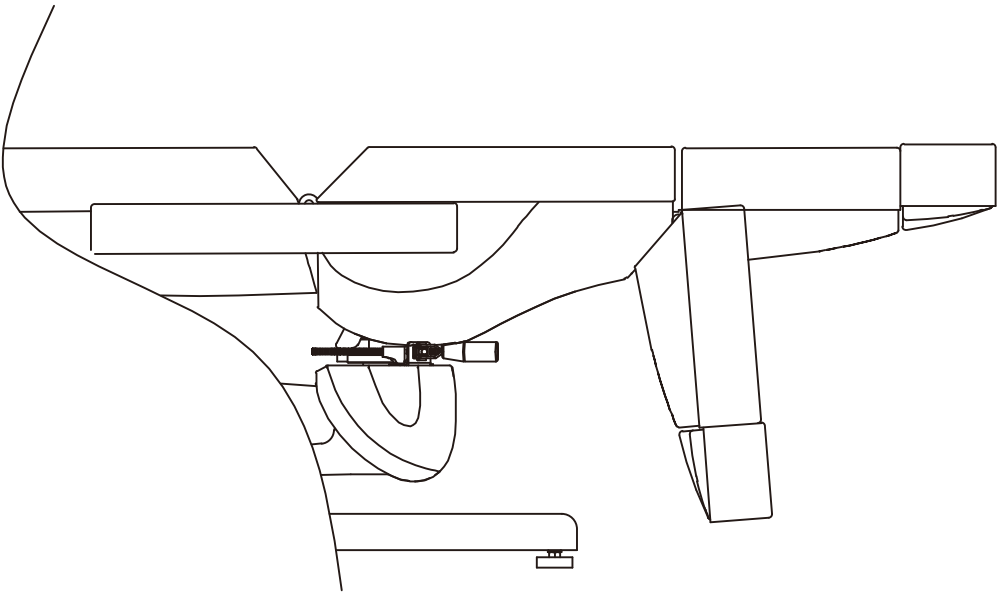
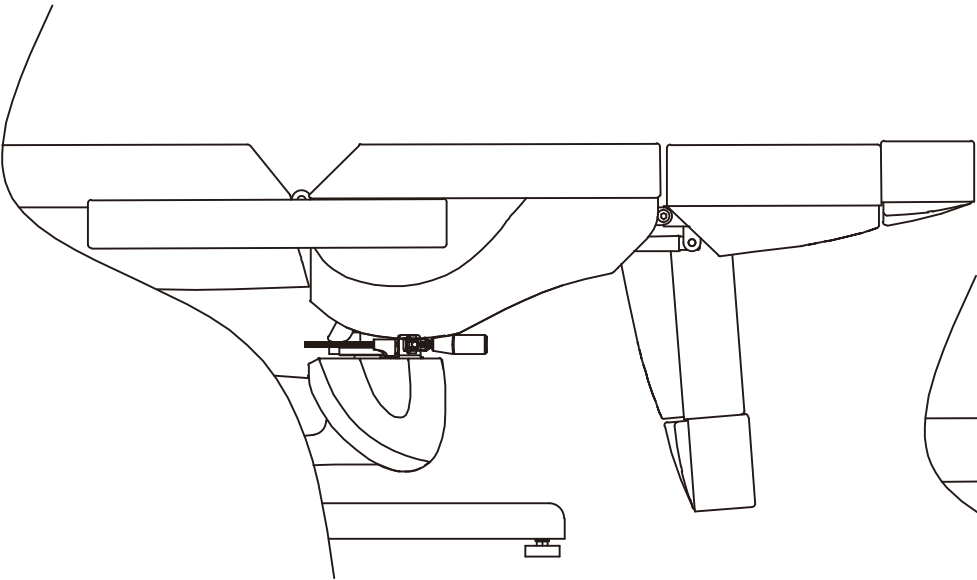
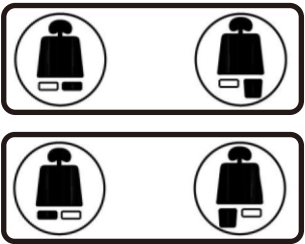
Backrest Adjustment



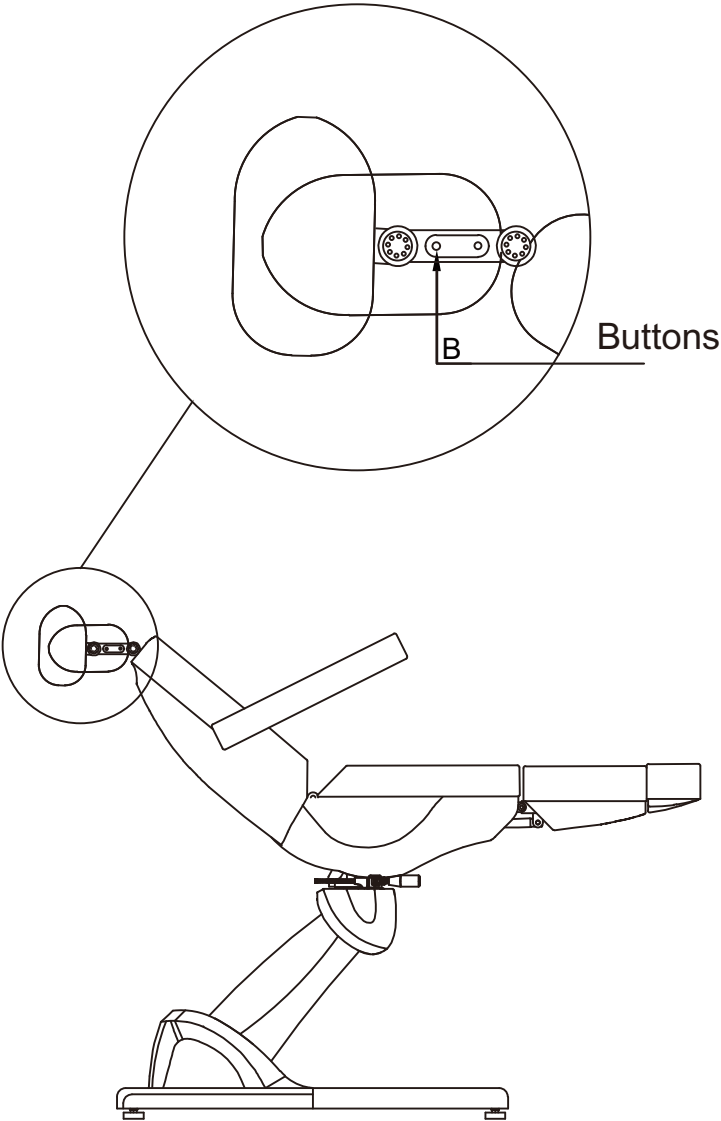
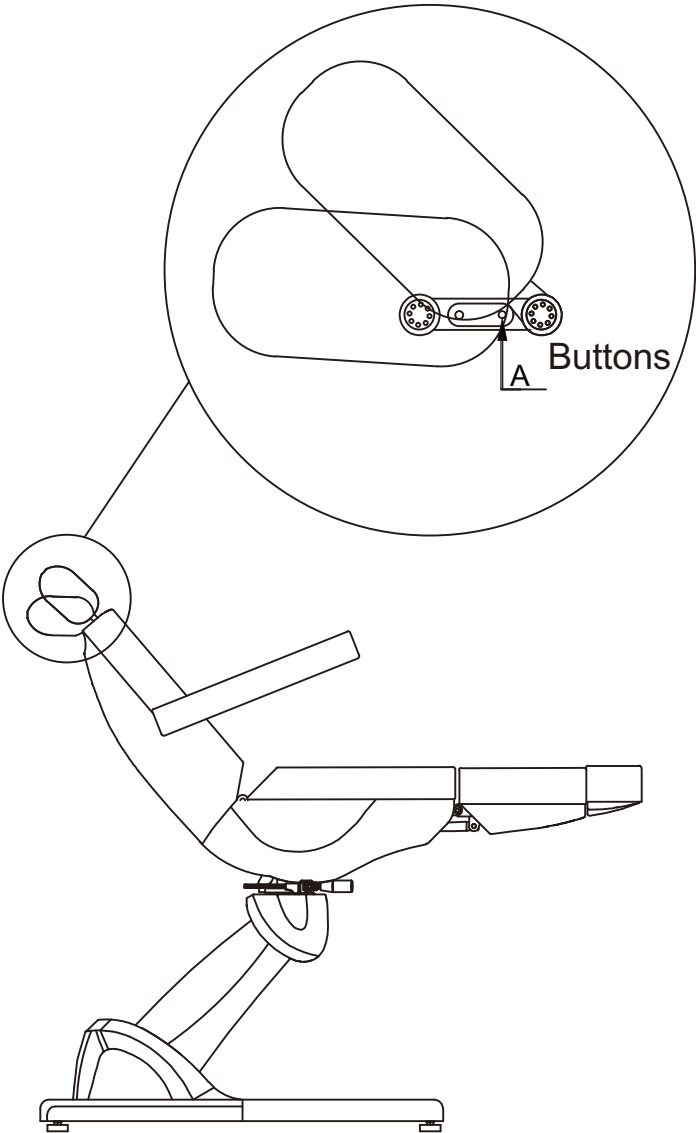
Seat Adjustment



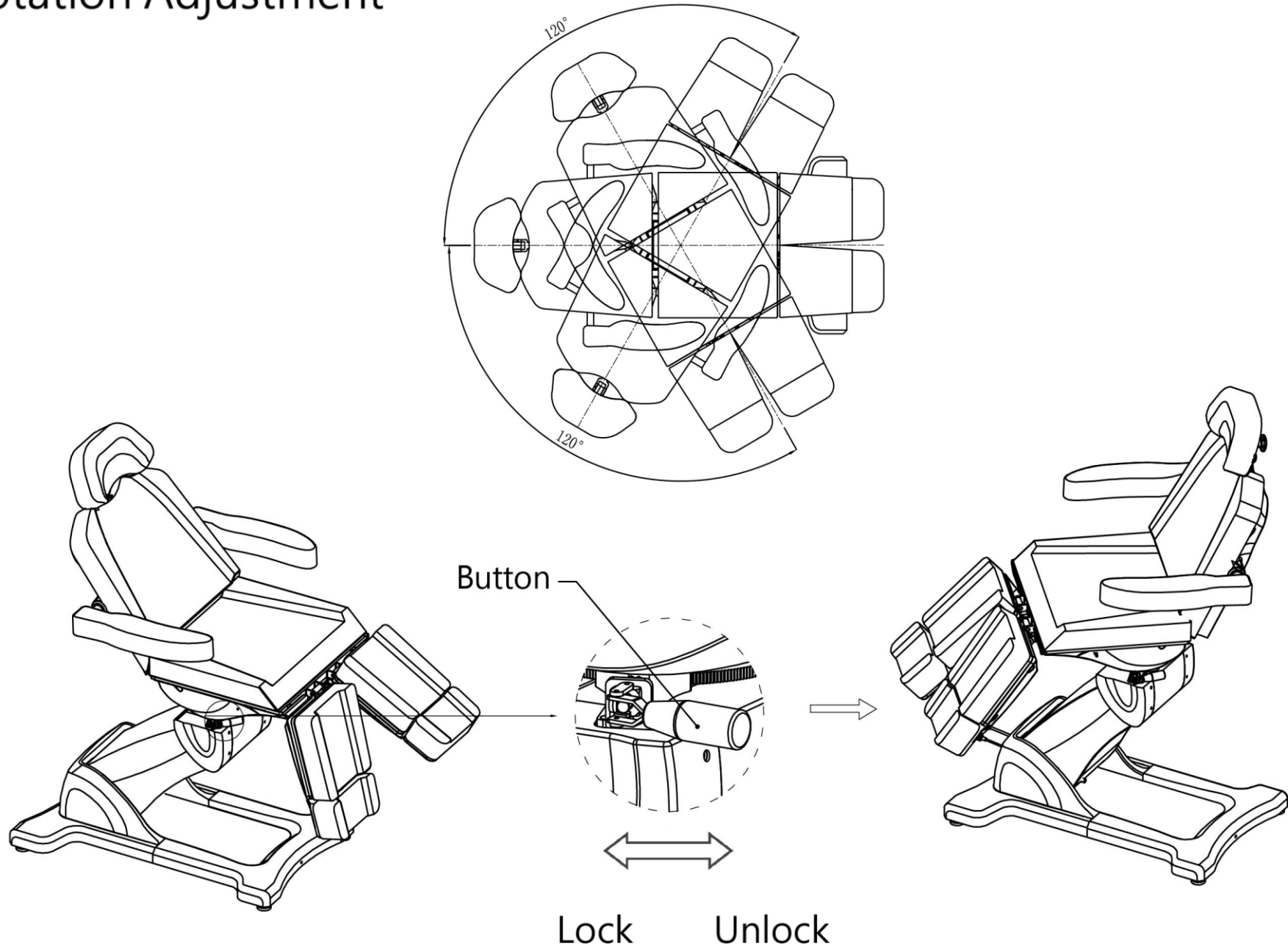
Leg Rest Adjustment



Headrest Adjustment



Rotation Adjustment



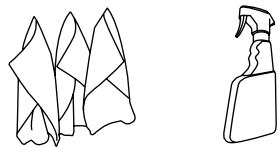
Maintenance & Care

1. Use damp towel to wipe and clean surface.
2. Simple soap and water can be used to wash surface.
3. Avoid using abrasive cleaning agents.

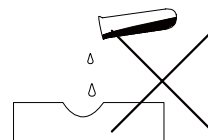
Product care



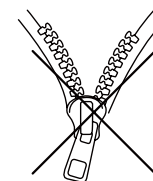
Brush away excess hair



Clean surface with damp cloth or
use simple soap & water solution.



Avoid using corrosive cleaning
agents such as bleaches.



Do not remove upholstery
for cleaning

Technical Troubleshooting Guide

Problem	Possible Cause	Solution
*Unresponsive button controls *Beeping sounds	1.Thefunction of con trol button has reached to maximum. 2.To check if the power plug is connected. 3.To check if each connecting plug of the transformer is connected.	1.Try to press other control button. 2.Disconnect the power plug and connect it again. 3.Disconnect and reconnect all ports to the transformer.

Warranty

The warranty period is one year. DIR warrants to you, the original buyer, that goods shall be free of defects in material and/or workmanship for one year from date of delivery.Damage resulting from improper handling after merchandise is received, or from exposure to weather or extreme atmospheric conditions is not covered by the warranty.

For any other information please contact our support team:

DIR BIRMINGHAM

66 Rea Street South
Birmingham
B5 6LB
UK

Tel:
+44(0)121 6434777

Email:
dirstalon@gmail.com

DIR LONDON

Unit 1 River Road
Business Park
33 River Road, Barking
Greater London
IG11 0DA
UK

Tel:
+44(0)20 8591 9310

Email:
dirstalon@gmail.com

DIR NEW YORK

575 Underhill Blvd.
Suite 170
Syosset, NY 11791
USA

Tel:
+1 (718)628-6668
+1 (800)728-2008

Email:
sales@dirstalonfurniture.com