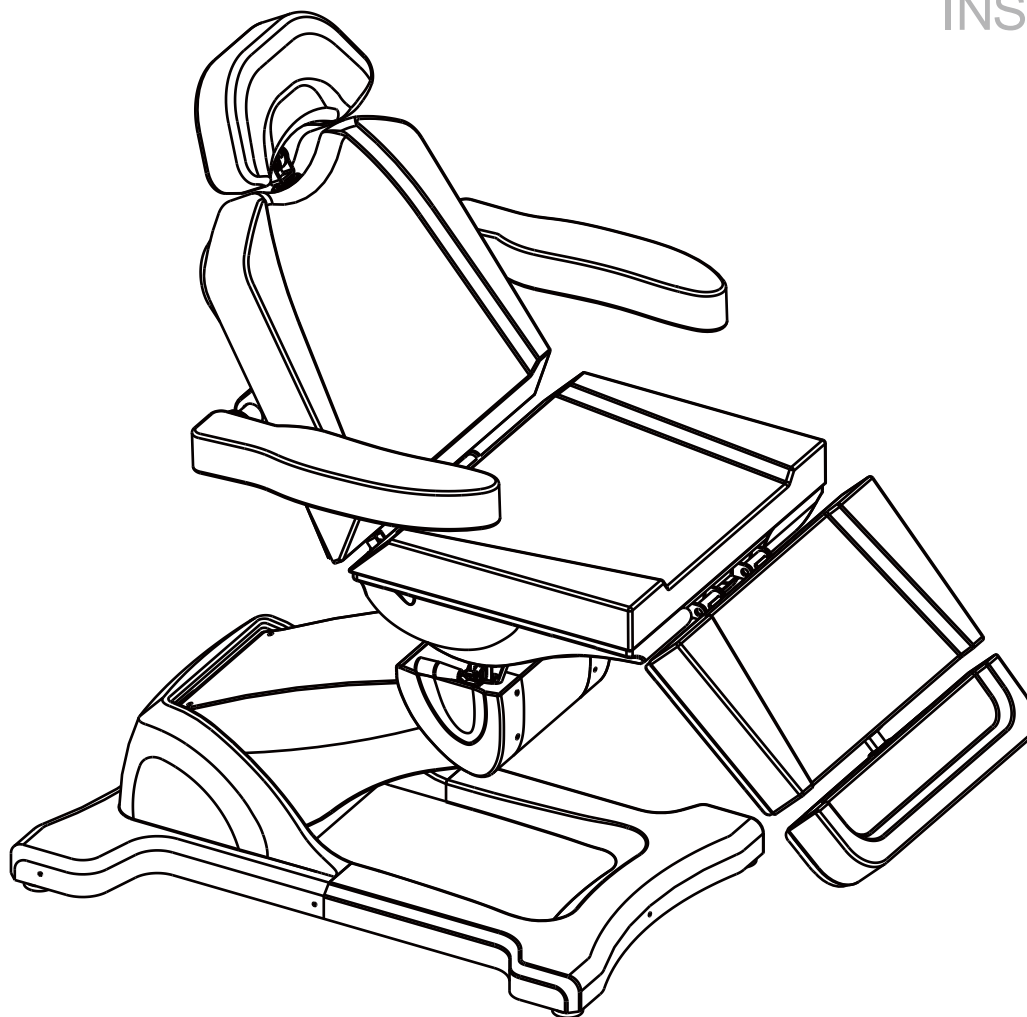


# DIR<sup>®</sup>

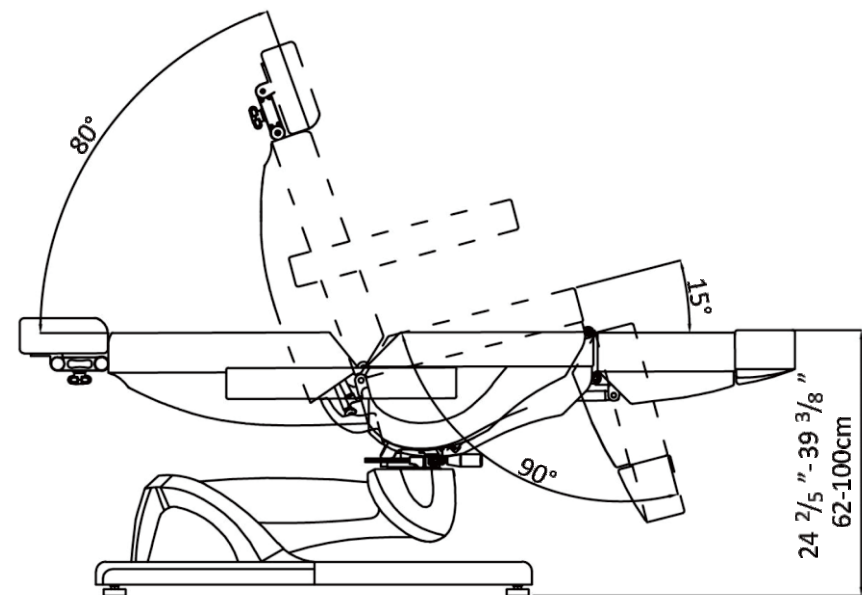
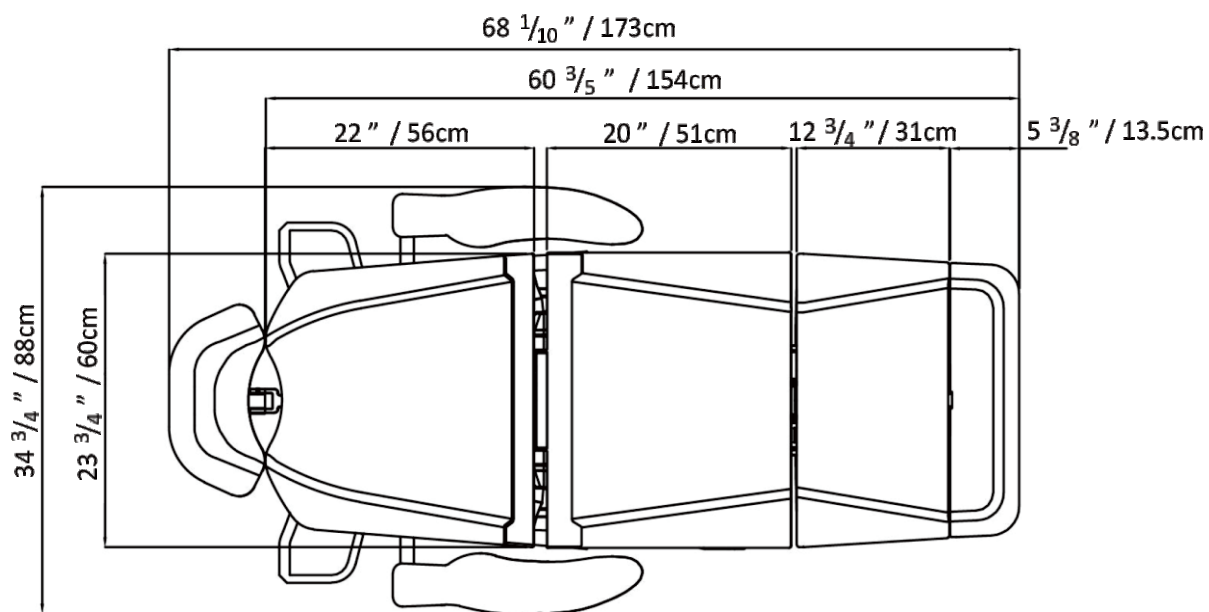
# Pavo III

8709-3G

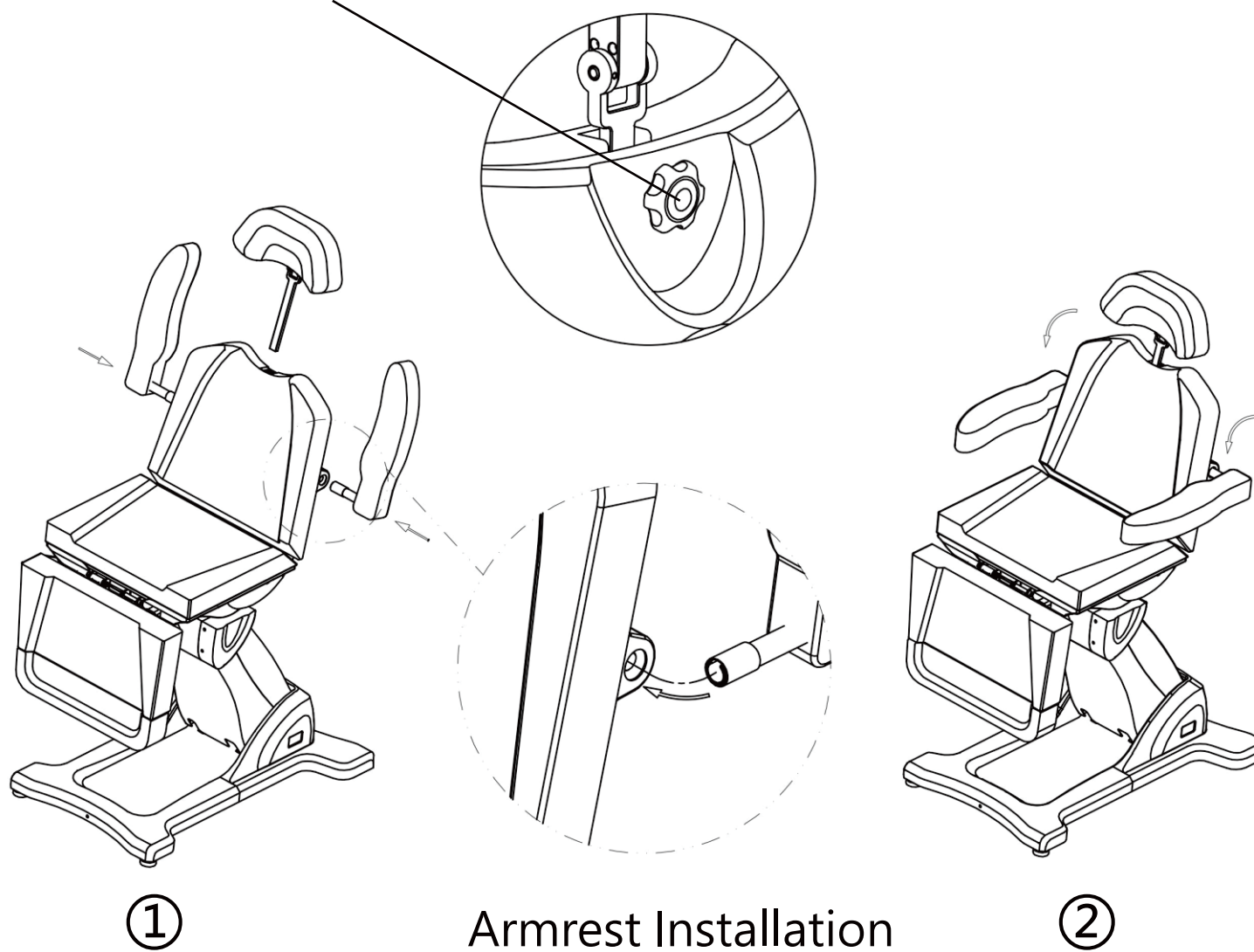
INSTRUCTION MANUAL

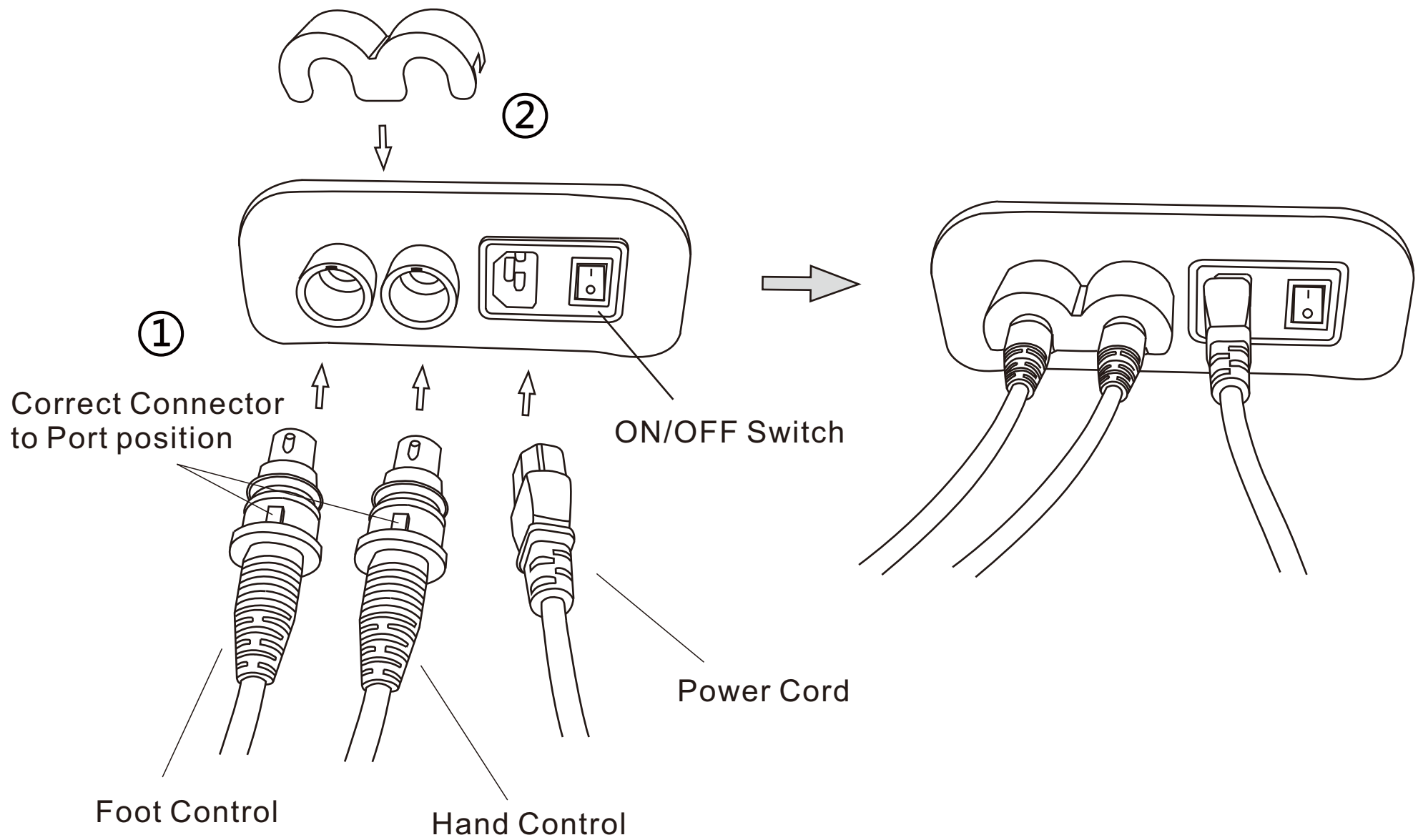


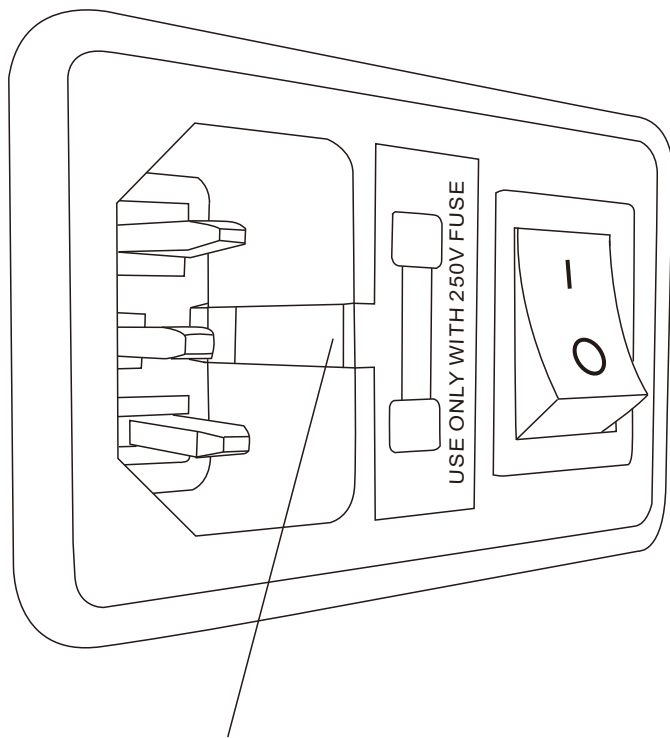
	USA	UK
Net Weight	185 lbs	84 kg
Max Load Capacity	400 lbs	180 kg
Input Voltage	AC 110V/60HZ	AC 230V/50HZ
Output Voltage	DC 24V	DC24V



Headrest Locking Knob





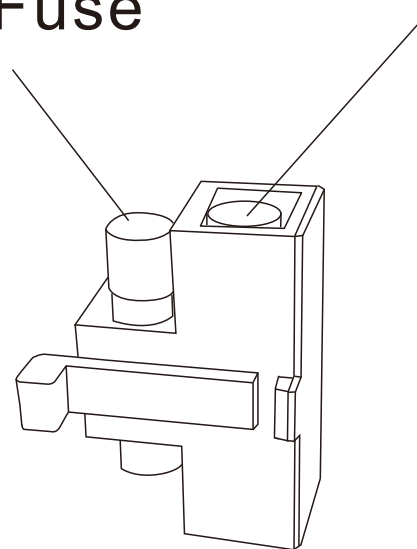


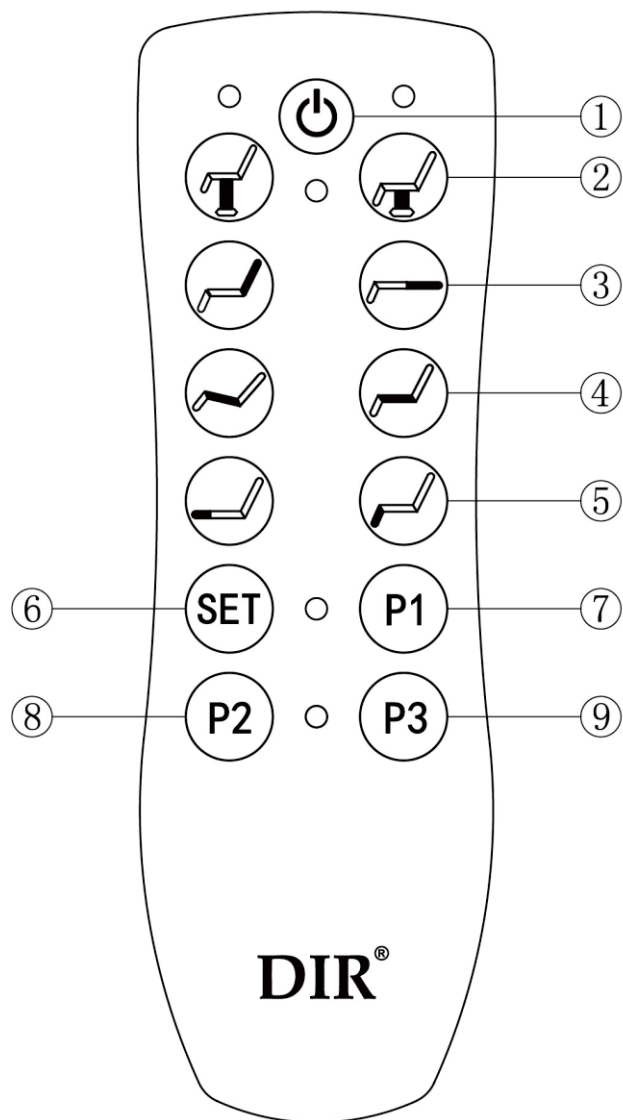
Fuse Housing



Spare Fuse

Fuse in Use





Press button ① to power ON the bed and be able to use all controls. Press ① again to power OFF the bed and the bed will return to its original state.

Press button ② to adjust the whole bed up and down.

Press button ③ to adjust the backrest up and down.

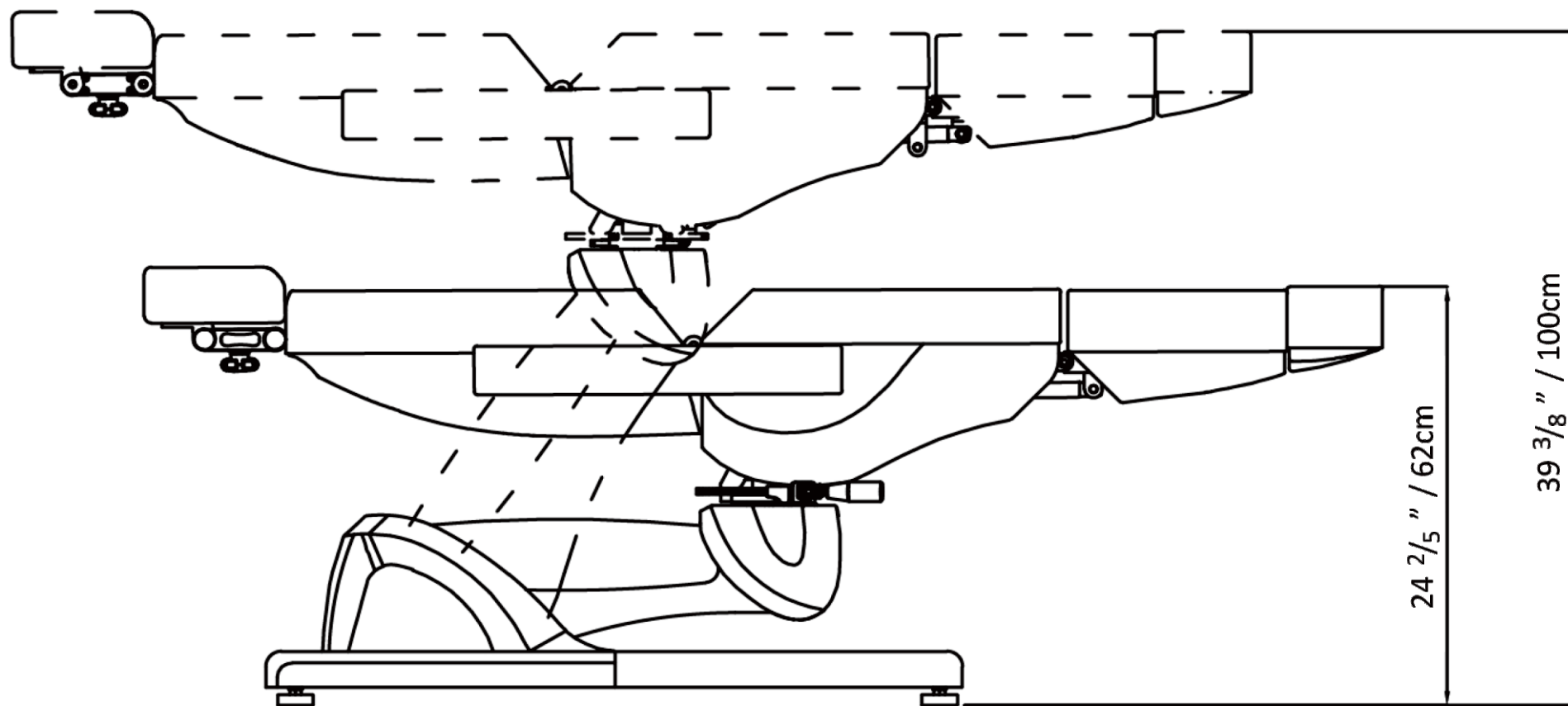
Press button ④ to adjust the incline angle for the seat.

Press button ⑤ to adjust the footrest up and down

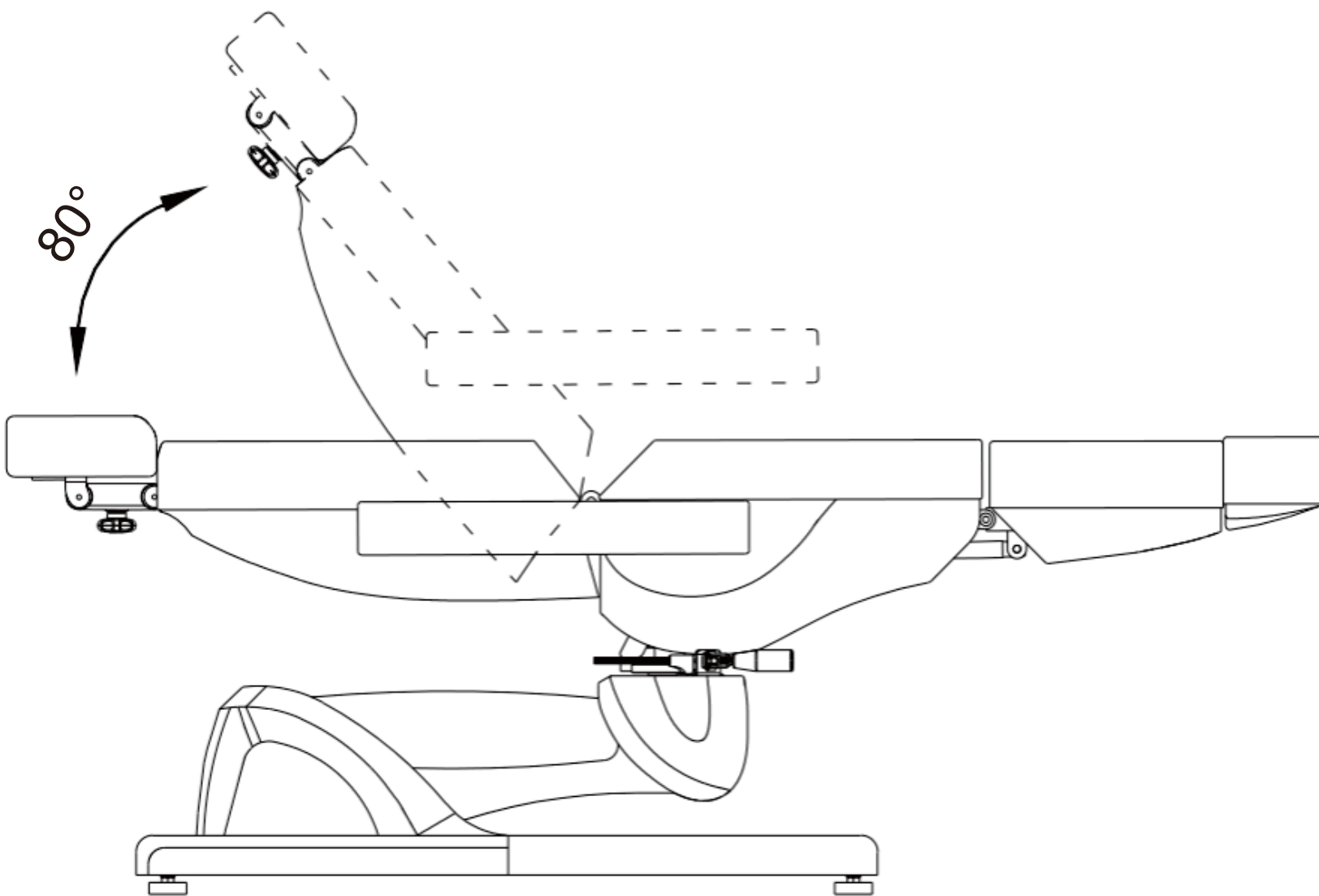
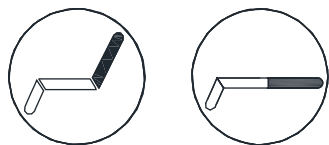
Press button ⑥ press and hold SET button to activate memory configuration.

Press button ⑦-⑨ for your pre-set preferred height & chair position, up to three settings.

## Height Adjustment

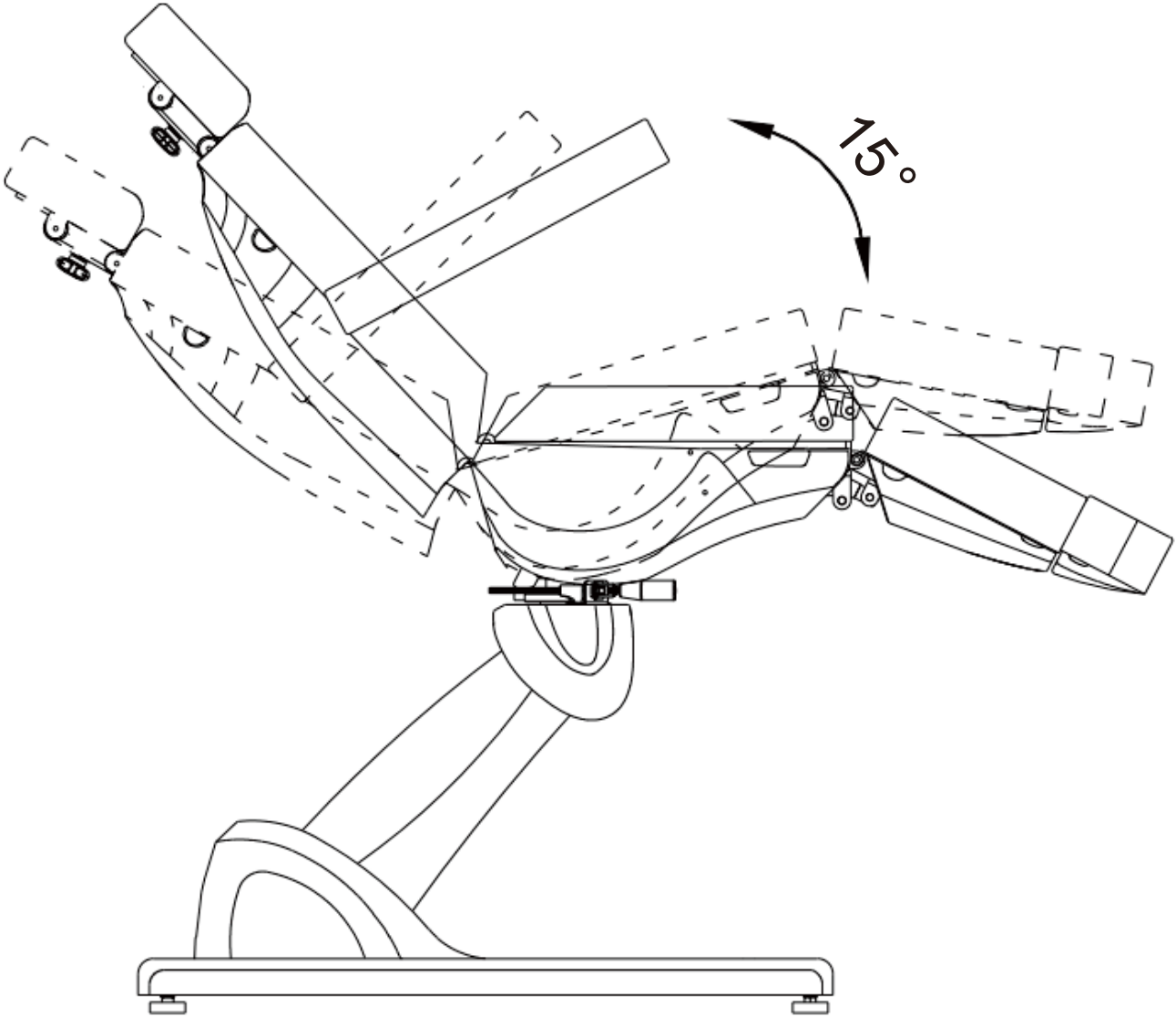
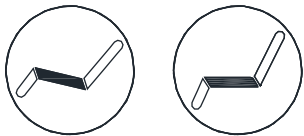


## Backrest Adjustment

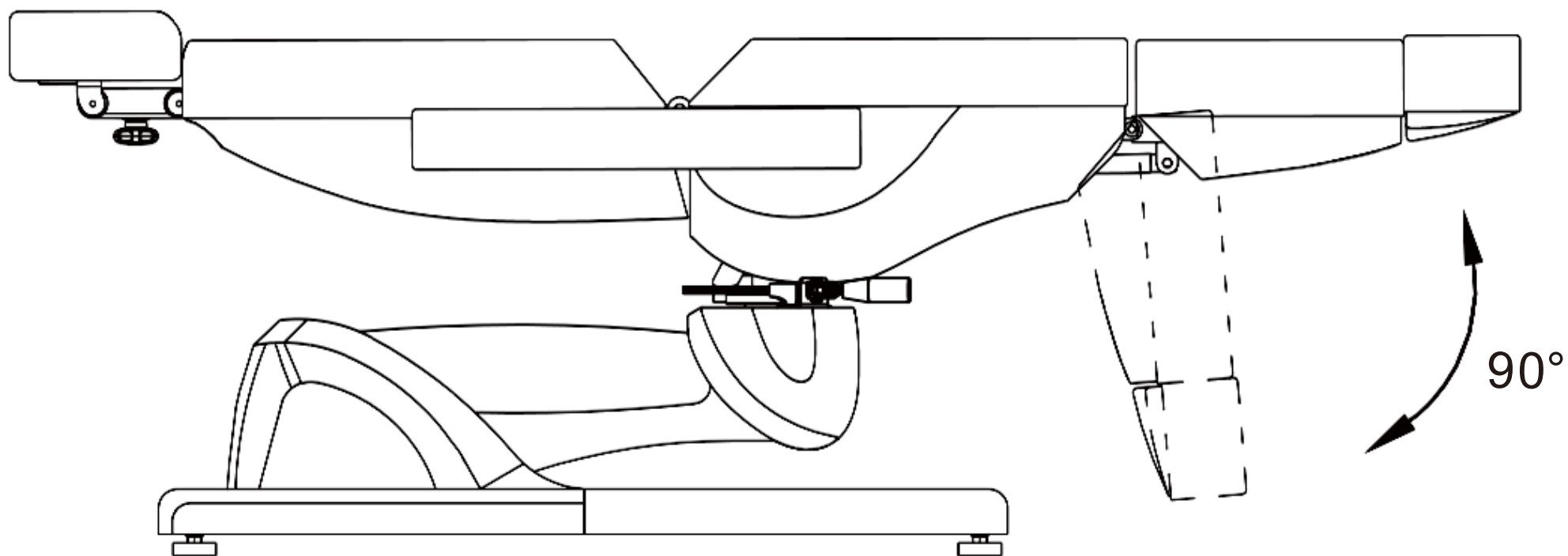
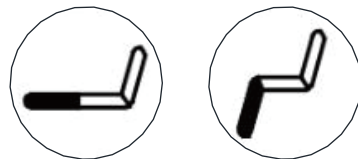




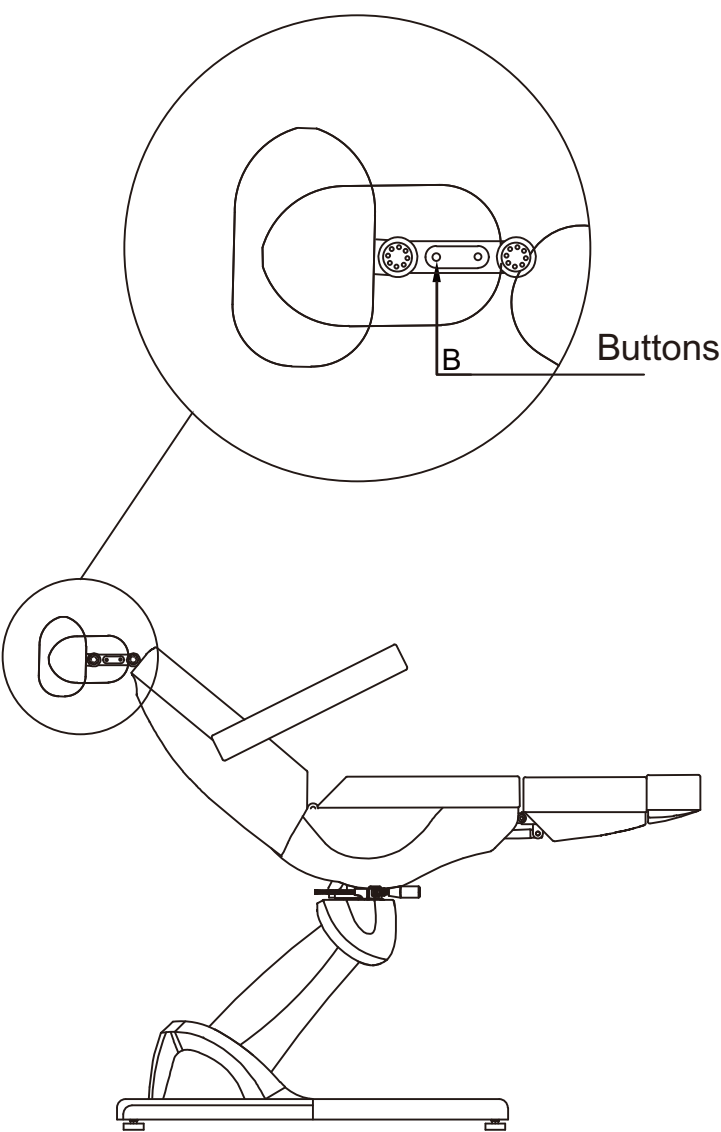
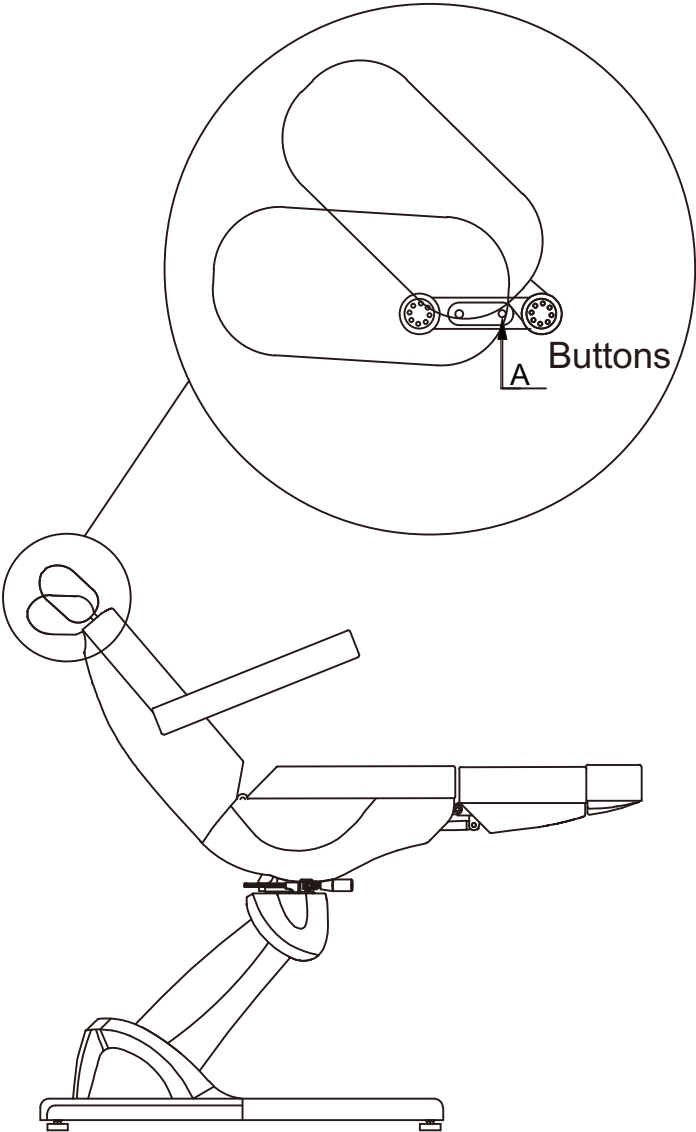
Seat Adjustment



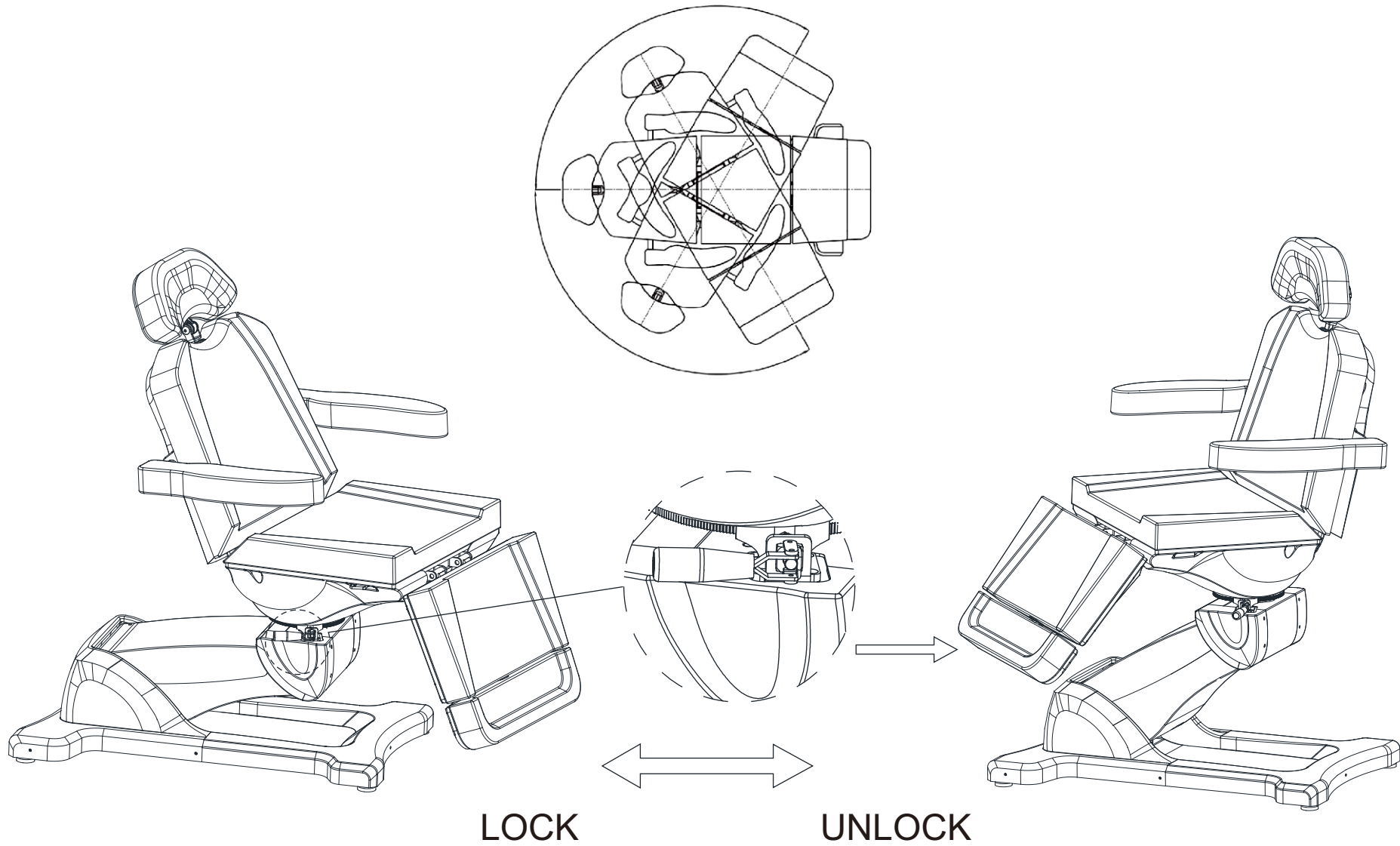
## Leg Rest Adjustment



# Headrest Adjustment



# Seat Lock and Rotation Adjustments



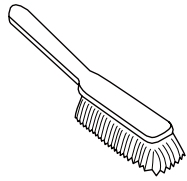
## Maintenance & Care

1. Use damp towel to wipe and clean surface.
2. Simple soap and water can be used to wash surface.
3. Avoid using abrasive cleaning agents.

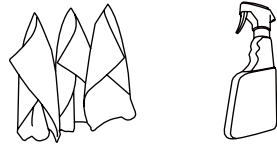
## Technical Troubleshooting Guide

Problem	Possible Cause	Solution
*Unresponsive button controls *Beeping sounds	1.The function of control button has reached to maximum. 2.To check if the power plug is connected. 3.To check if each connecting plug of the transformer is connected.	1.Try to press other control button. 2.Disconnect the power plug and connect it again. 3.Disconnect and reconnect all ports to the transformer.

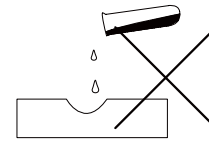
## Product care



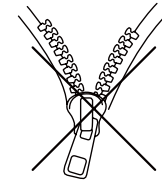
Brush away excess hair



Clean surface with damp cloth or use simple soap & water solution.



Avoid using corrosive cleaning agents such as bleaches.



Do not remove upholstery for cleaning

## Warranty

The warranty period is one year. DIR warrants to you, the original buyer, that goods shall be free of defects in material and/or workmanship attributable to manufacture for one year from date of receipt of product. Damage resulting from improper handling after merchandise is received, or from exposure to weather or extreme atmospheric conditions is not covered by the warranty. For any other information please contact our support team:

### DIR Birmingham

66 Rea Street South  
Birmingham  
B5 6LB

Email: [sales@dirstore.co.uk](mailto:sales@dirstore.co.uk)  
Phone: +44 (0) 121 6434777

### DIR London

Unit 1 River Road Business Park,  
33 River Road, Barking,  
Greater London, 1G11 0DA

Email: [sales@dirstore.co.uk](mailto:sales@dirstore.co.uk)  
Phone: +44 (0) 20 8591 9310

### DIR New York

575 Underhill Blvd Suite #170  
Syosset, NY 11791, USA

Email: [sales@dirsalonfurniture.com](mailto:sales@dirsalonfurniture.com)  
Phone: +1 (718) 628 6668  
+1 (800) 728 2008  
Fax: +1 (855) 628 5168